

# A WORLD-LEADING CENTRE FOR THE KNOWLEDGE ECONOMY

## THIS DRIVES GROWTH AND JOB CREATION



**Digital technologies** has been the fastest-growing sector between 2010-2014, adding **£5.3 BN** to London's GVA



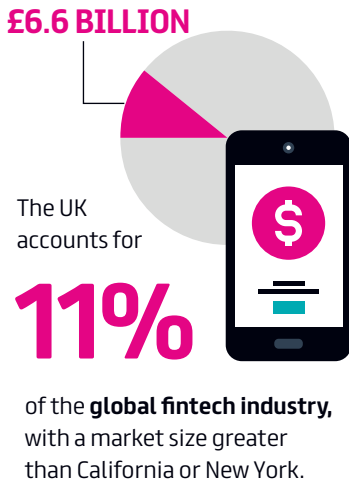
London is ranked **first in the European Digital City Index of tech start-ups and scale-ups** ahead of Paris, Berlin and Amsterdam.



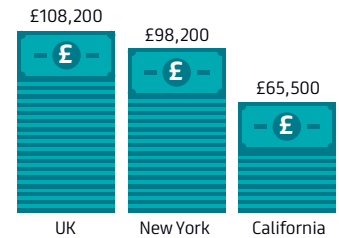
London and the SE has **more employees in the technology and information sector than the state of California.**

## LONDON LEADS IN FINTECH

by leveraging its strength in financial services.



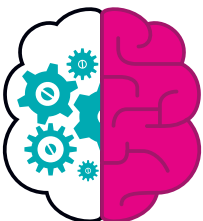
London has **61,000** people **working in fintech**, compared to 57,000 in New York



**Revenue per employee £108,200** in the UK, compared to New York (£98,200) and California (£65,500).

## LONDON'S DATA AND ANALYTICS EXPERTISE SUPPORTS ITS STRENGTH IN SCIENCE.

### World class research clusters

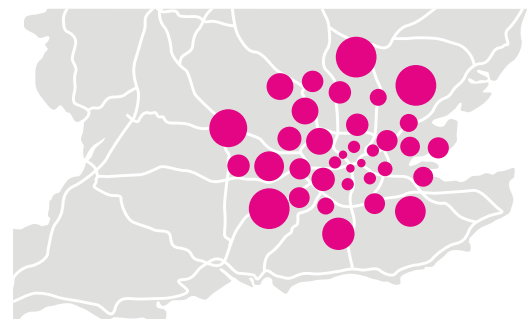


Turing Institute



Francis Crick Institute

### London anchors a vibrant life sciences cluster

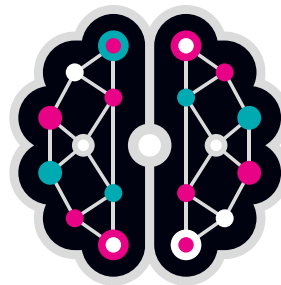


# LONDON NEEDS TO SUPPORT INNOVATIVE BUSINESSES TO GROW

## THERE IS A SHORTAGE OF SKILLED TECH WORKERS



Nearly **80%** of London's tech companies think technical skills shortages are the biggest **barrier to growth**



Future access to tech talent may be at risk by leaving the EU

## LONDON'S INADEQUATE WIRELESS INFRASTRUCTURE IS A CONSTRAINT ON GROWTH

London is ranked



**26TH** (in Europe) on fixed broadband speeds



**28TH** (in Europe) on wireless speeds



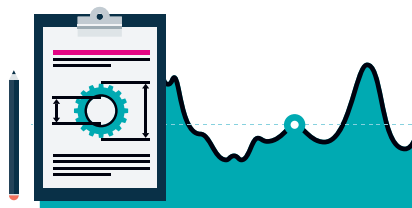
London has been **slow to build smart city infrastructure** compared to leading cities (e.g. Singapore, Amsterdam, Gothenburg, Barcelona)

## THE UK IS THE LARGEST RECIPIENT OF EU R&D FUNDING.

The UK receives

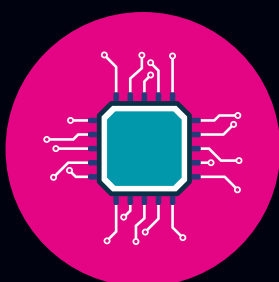
**€8.8BN**

out of €107bn (2007-13) from the EU R&D budget



Maintaining funding will be essential to **sustaining London's strengths in innovation.**

## TO SUPPORT THE KNOWLEDGE ECONOMY WE NEED TO:



Strengthen digital connectivity



Improve funding and regulation for innovative SMEs